

WELCOME

Welcome to Prior Pursglove College! We are a well established Sixth Form College with a long history of providing an excellent educational experience for our students.

We have a strong reputation for high standards, outstanding facilities and a real commitment to helping you, as an individual, to be as successful as you possibly can be. We want you to be happy here.

We specialise in full time courses for the 16-19 age group, providing a very wide range of Advanced level and Intermediate courses which can be taken in any combination. We also offer an extensive range of adult education and leisure courses, which you will find information about in our Community Learning and Leisure Guide.

The results that our students achieve regularly place us among the top performing colleges in the country. We are proud of their achievements and of the part we have played as a college in their future success. Our most recent and highly successful Ofsted inspection in particular praised our high standards and the care and support we give our students.

At Prior, you will find first class staff who really care about you and your success. You can be assured of a warm and friendly welcome and a desire to support every individual to achieve the very best they are capable of. You will be encouraged to develop a mature and responsible approach to your studies, so that you can learn and achieve to the best of your ability. We also hope that you will enjoy your time with us and make new friends. We have a lovely campus, attractive buildings and excellent resources.

Taking the step from school to college is an exciting move. Our Open Evenings offer you and your parents the chance to visit the college and discuss your options with staff and, most importantly, our students. We are committed to helping you make an informed choice about your future and we hope you will come along to one of these evenings and find out how welcoming we are for yourself.

This is an exciting time in the history of our college. In May 2011 we celebrated our 450th anniversary; there having been educational provision on our campus since 1561.

We are very proud of our historical heritage and we are confident that the college has a bright future ahead. I hope very much that you will want to join us and be a part of that too. I look forward to meeting you soon.

Judy Burton

Principal



OUR CAMPUS

The facilities at the college are some of the best in the area with an extensive Resource Centre housing over 200 networked computers and individual study areas, as well as digital video facilities and traditional lending and information services.

In addition, we have numerous specialist teaching facilities including a drama theatre, full size sports hall, music technology suite, digital language laboratory, science laboratories, specialist art rooms including a photographic dark room as well as extensive IT facilities and a learning café.

All students have internet and email access via more than 600 computers and WiFi is available free of charge throughout the campus. Almost every area of the campus is accessible to students with mobility difficulties. There are ramps, automatic doors, lifts and accessible toilets and reception has a hearing loop.

We recently completed a £6m building and refurbishment project, which provides many more modern classrooms, an extended Resource Centre and more communal space for students. The college will be further upgrading its facilities over the next few years, ensuring that it continues to provide the best resources possible.



STUDENTS' UNION

The Students' Union is a group of students at Prior that represent all of the students in the college. We meet at lunchtime every Tuesday to discuss ideas that can make the college experience even better for students.

The President and Vice President are elected by the student body and we have officers in place who take on the key roles of Secretary, Treasurer, NUS Link, Equality and Diversity, Charities, Marketing and Facilities.

We campaign for student discounts in the local area, lobby MPs and the local council as well as working closely with the College Senior Management Team. We are always available to have a chat about any problems and represent you in any issues you may have, we also work closely with the NUS.

We have a separate Events Team who in the past year have organised events such as Prior's Got Talent, the Haunted Sleep Over, Pillow Wars and Freshers' Fayre, as well as a trip to Alton Towers. The team have had a successful year of fundraising, with a fun week for Children in Need, a Help For Heroes campaign and a sponsored abseil. They also organised many fun activities for Red Nose Day, including a Staff-Student Dance-Off!

The Students' Union is a great way to express issues positively and get involved with college life whilst boosting your experiences. Sign up at the Freshers' Fayre or come along to one of our weekly meetings to make any suggestions and to meet the team. Otherwise, email us or speak to our Student Liaison Officer who is situated next door to the Refectory and always available for a chat.

Embrace college life with Prior Pursglove Students' Union.

Contact us:

student.union@prior.pursglove.ac.uk

Cameron Giles (President)
CG.1547@prior.pursglove.ac.uk

Adam Bates (Vice President)
AB.1718@prior.pursglove.ac.uk

Andrea Booth (Student Liaison Officer)
a.booth@prior.pursglove.ac.uk



CONTENTS

At Prior Pursglove College we are able to offer a much wider range of subjects than many other colleges and schools due to the large number of students who choose to come here for their sixth form studies.

You can be sure to find a subject that interests you. If you require more in-depth information about the subjects we offer please take a look at the college website where you will find copies of our course information guides. Alternatively, you can contact the college either by telephone or email and we will send you copies.

For the A level and National Diploma courses the entry requirements are a minimum of five GCSE grades C or above and for some subjects there may be specific GCSE requirements. For the Intermediate level courses students generally have some GCSEs grades D/E, although there are always exceptions and we will look at each student as an individual. Contact us if you are not sure.

Level 2 Courses

GCSEs, BTEC First Diplomas and other short courses

Art & Design	14	ICT (OCR Level 2)	28
Business (Applied)	16	Latin	30
Child Development	17	Mathematics (Modular)	33
Community Sports Leaders Award	18	Functional Mathematics	33
English Language	22	Performing Arts	36
English Functional Skills	22	Science	39
Health & Social Care	27	Spanish	40

Level 3 Courses

AS/A Levels and BTEC Extended Diplomas

Accounting	12	Health & Social Care	27
Animal Management BTEC Subsidiary Diploma	12	History	28
Archaeology	13	ICT (OCR Level 3)	29
Art & Design (Fine)	13	Italian	29
Art & Design (Graphic Communication)	13	Law	30
Art & Design (Photography)	14	Law (Applied) BTEC Certificate & Subsidiary Diploma	31
Art & Design (Textiles)	14	Mathematics	31
Biology	15	Pure Mathematics	31
Business Studies	15	Decision Mathematics	31
Business Studies BTEC Subsidiary Diploma	16	Mechanics	32
Chemistry	17	Statistics	32
Classical Civilisation	17	Use of Mathematics	33
Computing	18	Media Studies	34
Design & Technology	19	Media Studies OCR (Writing & Publishing)	34
Drama	19	Music	35
Economics	20	Music Technology	35
English Language	21	Performing Arts (Acting Pathway)	36
English Language & Literature	21	Philosophy & Ethics (Religious Studies)	37
English Literature	21	Physical Education	37
Environmental Studies	23	Physics	37
Film Studies	23	Psychology	38
French	24	Psychology (Use of Statistics)	38
Further Mathematics	24	Sociology	39
Geography	25	Spanish	40
Geology	26	Sport (Development, Coaching & Fitness) BTEC Certificate, Subsidiary Diploma and Extended Diploma	41
German	26	Statistics	41
Government & Politics	27		

WHICH COURSE? WHICH LEVEL?

We offer a wide and varied choice of subjects and courses at different levels. Whatever your ability, you should be able to find a course to suit you. We welcome applications from all those who feel they can benefit from our courses.

The better your GCSE grades, the higher the level at which you can enter the college. However, there is still plenty on offer if you have lower GCSE grades. Please do not be deterred by any lack of formal qualifications or by not meeting the exact entry requirements – come and talk to us as we may be able to help.

Our courses fall into two categories; Intermediate level (level 2) and Advanced level (level 3). Intermediate level courses are generally suitable for students who have GCSE grades D/E and who feel they are capable of improving these grades with an extra year at college.

Advanced level courses generally last for two years and since they are relatively demanding they are suitable for those with at least five GCSEs at grades A* to C. In addition, many of our subjects also have specific GCSE subject requirements. You will find this information in our Course Information Guides, which you can view on our college website. Alternatively, you can contact the college to receive individual copies.

Some students have a mixed programme of courses at levels 2 and 3 to suit their individual needs.



Intermediate Courses (Level 2)	Advanced Courses (Level 3)
GCSEs	AS/A levels
Vocational GCSEs	Applied AS/A levels
First Diplomas/Certificates	National Diplomas



INTERMEDIATE COURSES

We offer a good range of GCSEs and vocational GCSEs. Many combinations are available to suit individual needs and make a coherent programme of study.

ADVANCED COURSES

What makes us stand out is the very large range of subjects and combinations which we can offer (around 50 at AS level and equivalent). The college has great expertise in advising on the best combination of subjects and the requirements of certain university courses and specific careers.

What is an A Level?

An A level normally takes two years to complete full-time. It is split into two parts, AS (Advanced Subsidiary) and the final A (Advanced) level. AS and A level qualifications focus on traditional study skills and each part makes up fifty percent of the final grade. You can choose from a wide range of academic subjects, as well as some 'applied' subjects.

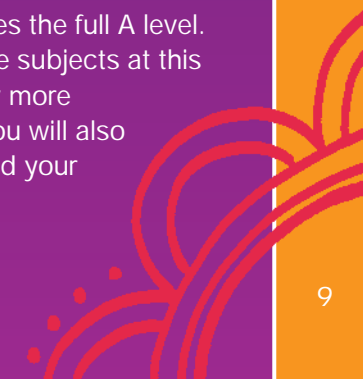
A and AS levels are one of the main routes into higher education, but they are also useful if you want to go straight into a job or training.

Most students studying for A levels take three or four AS levels in their first year. This means you can keep your options open about which subjects to study as a full A level.

AS and A levels are predominantly assessed through formal examinations, with a pass grade from an A* to an E.

The AS level is normally studied in one year and the standard is between GCSE and A level. This provides a smooth transition into the second year of study which is normally at the Advanced level. An AS is a qualification in its own right and earns points towards university applications. All of our courses are modular, with the opportunity to re-sit examinations if required.

The second part of the course is studied for one year after the AS and so completes the full A level. Most of you will specialise in three subjects at this level as they become increasingly more challenging in the second year. You will also be clearer about your interests and your career plans will have developed.



What is an Applied A Level?

These are designed for those of you who prefer a more hands on approach to your studies as they are largely assessed through coursework and assignments. They provide a broad introduction to specific vocational areas and help you develop the necessary skills, knowledge and understanding within that area. They are organised in the same way as other A level courses, with the two year course being split into AS and A2. There is also the option for you to study some of the subjects as a single or double award, the single offering you the equivalent of one A level and the double the equivalent of two. Single or double award programmes can be combined with other subjects to produce a full programme of study.

What is a BTEC Extended Diploma, Subsidiary Diploma and Award?

These are more practical, work-related courses which allow you to gain the knowledge and skills needed in specific vocational areas. You will learn by completing projects and assignments that are based on realistic workplace situations, activities and demands. As well as learning about the employment area that you have chosen, you will develop the skills needed to start your future career. It can be the equivalent of one AS level (the certificate), one full A level (the subsidiary diploma) or three full A levels (the extended diploma) depending on the course chosen. There is also the option to combine studying this qualification with additional AS level(s). At the end of the course you will have sufficient qualifications to progress to university or to enter employment.

Commitment to your courses

As a student at Prior Pursglove College, you are expected to show strong personal commitment to your college studies and to your individual learning goals by working hard. We ask that you tell staff about any concerns that may affect your learning, so that help and support can be arranged. You should participate fully in your chosen programme of study by maintaining full attendance in all timetabled activities, identifying periods within

your timetable for private study, being punctual, completing assignments and homework and meeting required deadlines.

At the beginning of each year you will be asked to make a formal commitment to your studies, when you will sign and abide by a learner agreement which outlines the commitment you make to your education.



SUBJECTS A-Z



Accounting AS/A Level

In the first year of the course you will learn the fundamentals of record-keeping and the purposes,

techniques and consequences of effective financial accounting. You will gain an appreciation of how financial accounting helps in measuring, monitoring and planning successful business operations and you will study business ownership, control, profitability, performance and budgeting.

Throughout the second year of the course you will develop an understanding of financial accounting techniques for businesses without a complete accounting system, for partnerships and limited companies. You will study in greater depth how accounting techniques aid business management and play a part in the decision making process. You will also investigate capital investment, budgeting and sources of finance as well as considering social accounting issues. There are two modules in both the first and second year of the course and learning is assessed by external examinations.

Animal Management BTEC Subsidiary Diploma

This course is the equivalent of one A level and is studied over two years. You will be able to study three other subjects alongside it. Course content includes:

- Animal health
- Animal behaviour
- Practical handling and husbandry
- Animal welfare and breed development
- Management of exotics
- Animal collection and management.

Archaeology AS/A Level

Archaeology is the study of humankind's past by looking at material remains. We can put together a picture of societies through the ages by looking at what people ate, where they lived, what they wore and how they died. We can analyse everything from buried cities to microscopic remains. We use all sorts of skills but there is an increasing use of science and scientific techniques in analysis.

Archaeology links well with many subjects including Biology, Chemistry, Physics, Classics, History, Geography, Social Sciences and others. Many people study Archaeology because they are interested in it, not just because they want a career in it. Prince Charles and Nick Clegg, our Deputy Prime Minister, both have degrees in Archaeology!

We cover religion and ritual in prehistoric Europe, archaeological skills and analysis at AS level and world archaeology and coursework research at A2 level.

Art & Design (Fine Art) AS/A Level

Fine Art skills are at the core of all art and design practice. On this course you will focus on three key

disciplines; painting, drawing and printmaking. Observational drawing underpins the course, and forms the starting point of all your projects. We will explore themes in fine art such as landscape, the human form and still-life. You will be introduced to expressive and experimental techniques as well as conceptual and contemporary practice. Your work will be informed by your contextual studies and you will be encouraged to visit galleries.

Art & Design (Graphic Communication) AS/A Level

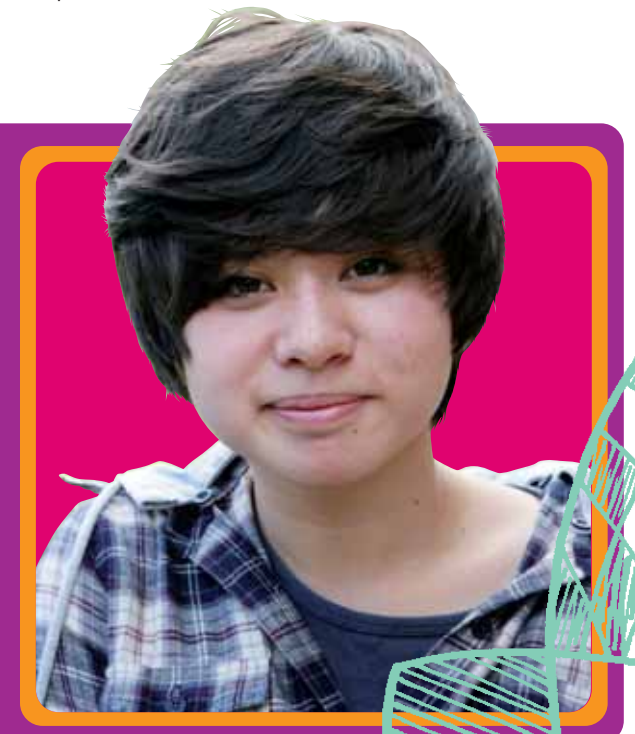
In this course you will study a range of art skills that focus on the communication of ideas and information. The first year introduces you to graphic image making, typographic design, illustration and the effective use of text and image. You will also be taught the fundamentals of digital photography and Photoshop. As you progress into the second year you will work on more in-depth specialist projects that develop these skills further. You are assessed on your portfolio which will consist of design sheets, sketchbooks and final pieces.

"I chose to study at Prior because of its academic reputation and brilliant exam results. There's a great atmosphere here and the teachers are friendly and treat you with respect. I would recommend it to anyone."

Sophie Midori Kuwamura

(Ex Stokesley School)

AS English Literature, Fine Art, Geography,
Psychology



Art & Design (Photography: Lens-Based and Light-Based Media) AS/A Level

This course offers both traditional darkroom techniques as well as digital image making. In the first year you will be given a technical introduction to the SLR camera and darkroom processing as well as the use of digital cameras. Throughout the course you will be expected to explore a range of themes creatively. Projects encourage you to develop your own personal ideas in your work and you will work with experimental techniques. You will investigate the work of various photographers looking at both technical aspects and the meaning and content of the work. You will also be given the opportunity to explore moving image and video.

Art & Design (Textile Design) AS/A Level

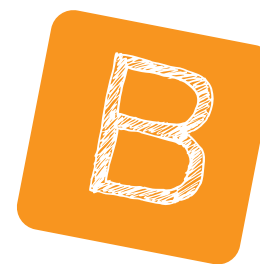
This course is very different to GCSE textiles. In the first year you will be introduced to various textile techniques such as machine and hand embroidery, appliqué, printmaking and construction. As you progress on the course you will be encouraged to explore more experimental techniques producing both sculptural and fashion-based outcomes. You will develop your expressive drawing and

painting skills, developing your understanding of elements such as pattern, texture and colour which will lead you to produce exciting textile work.

Art & Design GCSE

This is a one year course comprising of two units, one completed in the autumn term and the other the spring term. The coursework portfolio makes up sixty percent of the course and is made up of a series of short projects looking at photography, fine art, textiles and graphic design. In the externally set task you will be given a question paper as your starting point, preparatory time is followed by a ten hour exam.

Throughout the course you will be encouraged to explore and discuss your ideas and be creative and open-minded. Passing this course will allow you to progress onto any AS art course or the National Diploma.



Biology AS/A Level

No science is changing as much as Biology. Media coverage of issues such as the 'Human Genome Project' and genetic

engineering has brought the subject to everyone's attention over recent years and there is a wide range of courses and careers to which you could progress with a qualification in a Biology-related subject. You may be interested in areas such as biotechnology, environmental protection, medicine or nutrition, and may wish to go on to study at degree level after A2, or you may simply want to take Biology at AS level over one year to complement your other subjects.



"I chose to come and study at Prior Pursglove because of the opportunities available and because of how different it seemed compared to my old school. The help and advice you get is always useful and there is always someone to help if you need it."

Katie Norman

(Ex Whitby School)

AS Biology, Chemistry, Mathematics, French

Business Studies AS/A Level

This course emphasises the importance of business to individuals and society and encourages you to examine and evaluate real business situations.

The AS level introduces you to the challenges and issues associated with starting a business, including financial planning. It then explores the key internal functions of business and how the management of these can assist in improving the effectiveness and performance of a business.

At A level you will look at financial, marketing, operations and HR strategies used by larger businesses and how these adapt to changing circumstances. You will also consider the effects that external factors have on businesses and how they plan for and manage change, including leadership style and change in business culture.



Business Studies BTEC Subsidiary Diploma

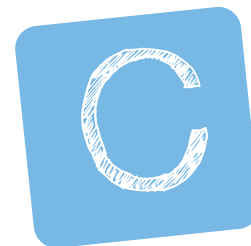
This qualification equips you with a broad understanding of the essential knowledge and skills needed to help you begin or progress in a wide variety of business careers. The four core units in the subsidiary diploma give learners an introduction to and understanding of the business environment, management of resources, marketing and communication – all fundamental to the success of business organisations. In the second year there will be optional units that are chosen based on key areas of interest, for example, starting a small business or event management to name just two possible modules.

Business (Applied) GCSE (Double Award)

The Applied GCSE in Business is an ideal course for those with no prior knowledge of the subject, wanting a broad background in the subject area. With a value equivalent of two GCSEs the fundamental philosophy of this course is that in order to understand the nature of the business, you need to experience the business environment for yourself. This will be achieved through the study of, and participation in, a series of vocationally-related activities that will bring you into contact with real businesses. This is achieved using a variety of approaches including work experience, links with local employers, case studies, research and invited speakers.

Students taking the full double award will take four modules. These are:

- Business in action
- Making your mark in business
- Working in a business
- Business and you.



Chemistry AS/A Level

Chemists are involved in everything from research into solving global environmental and pollution problems to the large-scale manufacture of plastics, perfumes and medicines. This subject not only allows you to investigate chemical processes but also enables you to make judgements on the efficiency of their reactions and how we minimise the impact on the environment. You will develop a high standard of practical skills and earn a qualification which is well respected by universities as one which is both challenging and thorough in its approach.

Child Development GCSE

Are you interested in a career which involves working with children? Are you simply interested in finding out more about the way children develop from birth to 7 years old? You may be considering a career in primary teaching, children's nursing, nursery nursing, midwifery, social work or related areas. If so, this course will be a useful addition to your portfolio and it will also increase your life skills.

Classical Civilisation AS/A Level

This is a fascinating and challenging course in which you study the ancient civilisations of the Greeks and the Romans. It is a stimulating subject where you will explore ancient literature, culture and artefacts. You will consider a range of themes and characters from ancient literature and real life, and explore possible answers to questions such as:

- What is a typical Greek hero?
- How did ancient Greek and Roman life differ from our own?
- What can we learn about Roman society from its towns, buildings and institutions?
- What purpose did the myths serve in ancient culture?
- What can archaeological and literary evidence tell us about the ancient world?



"I chose to come to Prior because it was the only college to offer Accountancy. I have achieved my aims at the college, where I have always been given support when I needed it and the staff have always been very helpful."

Rahel Aziz

(Ex Oakfields School)

Business GCSE (Double Award), progressed to BTEC Personal Business & Finance, AS Business Studies, Statistics

"I chose to attend Prior because of the wide range of courses on offer and the friendly atmosphere on the college campus."

Zoe Lyons

(Ex Redcar Community College)

AS Biology, Classical Civilisation, History, Health & Social Care



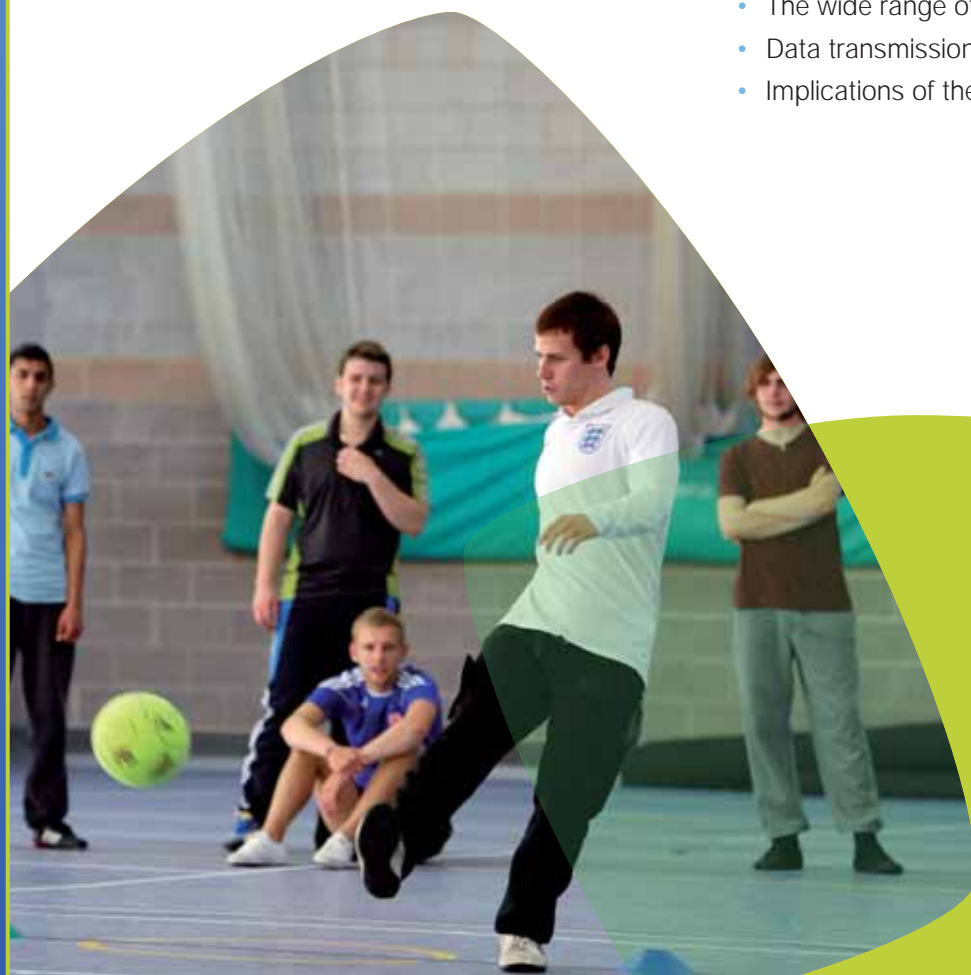
Community Sports Leaders Award

A practical, sports based course which is open to anyone interested in developing their leadership skills. (You are not assessed on your sporting ability.) It will enable you to have some fun and gain a very useful qualification at the same time by learning how to organise and supervise young people playing a wide variety of games – some of them invented by you. As part of the course you will also learn emergency first aid skills. Children from local schools will stretch your organisational skills and, after completing the required number of hours of experience (which you record in a log book), you will achieve a level two award that is broadly equivalent to the Duke of Edinburgh's bronze award.

Computing AS/A Level

There is a very clear distinction between ICT and Computing. Computing uses a computer to solve problems by designing new sequences of instructions (algorithms) and running them on the computer. This course has an emphasis on abstract thinking, general problem solving, algorithmic and mathematical reasoning and scientific and engineering based concepts. It is a good foundation for advanced logical reasoning and has a greater technical emphasis. At AS level about half of the time is spent on practical lessons, mainly focusing on problem solving through writing programs. The remainder of the time looks at the theoretical aspects, some of which are outlined below:

- Fundamentals of computer systems
- How computer systems store digital data
- Internal components of a computer
- The wide range of hardware devices
- Data transmission and networking
- Implications of the use of computers.



Drama AS/A Level

Drama is a very lively course which incorporates the practical study of set texts from the Greeks to the late twentieth century as well as investigating the theory and practise of acting, directing and staging live theatre. It offers you the chance to devise your own productions and to analyse and review performances you have seen as an audience. You will also look at the theory and practise of key theatre practitioners who have had a large influence on the modern stage as we know it today, such as Konstantin Stanislavski and Bertolt Brecht. The course is assessed by written exams, practical performance and a written portfolio.



Design & Technology AS/A Level

Our Design & Technology Product Design course reflects the wide-ranging activities of professional designers and gives you the opportunity for hands-on experience of design and making in plastics, wood and other materials. The design and practical workshop based studies are supported by exploration of human factors, materials, technology, marketing processes and design processes.

Design and technology is a valuable discipline for many career paths including architecture, construction, town planning, all engineering disciplines and many jobs in the design and creative industries.



"I came to Prior because it is a really good local college that provided the right courses for me. I attended the open day and the staff were really friendly, the college is just a nice place to be."

Lewis Parkin

(Ex Laurence Jackson School)
AS Design & Technology, Geography,
Mathematics, Physical Education





Economics A/AS Level

We ALL contribute to the performance of the economy via spending and saving decisions, therefore we should build up an

understanding of the economy and its impact on firms and citizens! This vital and stimulating course embraces a wide range of academic skills. In the AS course you will investigate macro and microeconomics.

Microeconomics addresses issues such as:

- Why are house prices so high?
- Can pollution be effectively controlled?
- Should governments interfere with markets?

The macroeconomic issues covered include:

- Why does the government have an inflation target and how does it affect us?
- What happens to the economy if we all decide to spend more?
- How are we affected by the Chinese and Indian economies?

If you choose to go on to the second year of the course you will develop further your knowledge of the micro and macroeconomics learnt at AS, considering economic concepts and theories in greater depth and recognising the values and limitations of the economic models. You will also explore the global context, which includes the impact of globalisation on UK economic performance and the European Union context, incorporating the effect of EU membership and economic policy on the UK economy.



"I came to Prior because of its high pass rates. Whilst here I would say that the support I have been given towards achieving my chosen career aim has been outstanding."

Mason Hallet

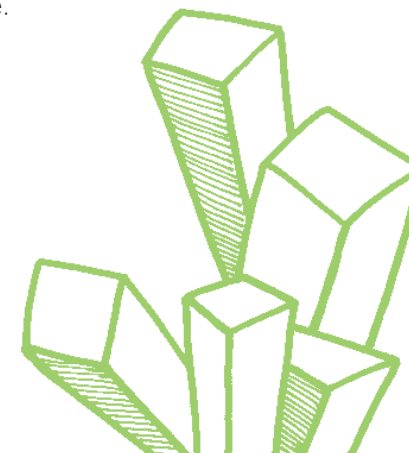
(Ex Ormesby School)

AS English Language & Literature, ICT, Psychology, Sociology

English Language AS/A Level

This is a very demanding course which introduces you to the ways that language works. It is essentially a course in applied linguistics, the 'science' of English. You will study issues and 'live texts' rather than complete books. At AS level you will look at linguistic context through analytical and creative work and explore concepts such as language and representation as well as developing your understanding of how language creates meaning in written, spoken and electronic modes.

At A2 you will complete a linguistic investigation into a topic of your own choosing, study how English language has changed from 1600 to the present day and explore how it varies from person to person and place to place.



English Language & Literature A/AS Level

This course is similar to the mixed course you will have studied at GCSE. It is a mixture of language and literature, without any coursework at AS level. You will study either prose or drama texts and you will look at the language of speech and complete language production work.

At A2 you examine a further three texts, one of which is poetry, two of these texts being assessed through a coursework folder. You will adapt existing texts for a new audience and make a final analytical comparison. At all times you will look at how language is used in both literary and non-literary contexts.

English Literature AS/A Level

You will study a broad and interesting range of texts in a variety of genres (prose, poetry and drama) by writers past and present. These include at AS level: the modern novel, Shakespeare and drama and poetry in context. At A2 level these include: two further texts studied in context, a coursework comparative piece and a final thematic paper.



"I chose Prior because of its great reputation and excellent variety of courses. I'd recommend it to anyone."

Sarah Caton

(Ex St Peters RC School)

AS Accounting, Business Studies, Economics, Mathematics

English Language I-GCSE

You will follow the newly endorsed I-GCSE for English, which is suitable for students taking the course in one year. You will study a range of written texts and carry out a variety of assignments assessing your skills in speaking, listening, reading and writing. You will complete an entirely new folder of coursework, giving you the opportunity to develop research, reading comprehension and writing in an environment that encourages independent learning. The I-GCSE exam tests the same skills for reading and writing and counts for fifty percent of the course. The qualification you will receive is an AQA Certificate in English Language which is the equivalent of a GCSE in terms of acceptability for progression onto AS courses and higher education. You will automatically be entered for the Foundation

paper (for a predicted C – G grade) but depending on your performance throughout the year, you may be entered for the Higher paper (for a predicted A* – D grade) in consultation with your teacher.

English Functional Skills

This is a one year level 2 course involving practical applications of literacy in everyday situations. It leads to a well recognised qualification which can be a good alternative to GCSE English.

Environmental Studies AS/A Level

The subject looks at natural processes, especially chemical and biological, and the impact of human activities upon them. Environmental Studies provides an opportunity to study a range of issues of environmental importance and the scientific principles and concepts which underpin them. You will study habitat destruction, global warming, ozone depletion, smog, waste management and pollution.

The emphasis is on a scientific approach to the study of the environment, to provide the knowledge and understanding to enable an informed judgement to be made on matters of actual or potential environmental conflict. This means that you assess the effectiveness of recycling of waste e.g. bottle banks or why wind farms are falling out of favour with some environmental groups.

Environmental Studies is considered by most universities as a science. This is a new field of science that combines the issues-based strands of Biology, Geography, Geology and Chemistry. The interest and appreciation of the environment has grown hugely in the last decade and now pervades in all aspects of human activity and development. The increasing threats of pollution, climate change, resource shortages and spiralling costs of energy supplies makes this a very relevant subject.



Film Studies AS/A Level

Film Studies is an exciting and stimulating course. In the first year the coursework production will

introduce you to the codes and conventions of cinema so that you can learn to read a film in specific detail – observing the reasons behind camerawork, editing and other factors. You will then use this knowledge to produce a portfolio of written essays and practical work (screenplays/storyboards) where you demonstrate how meaning is made to audiences of film. You will investigate British and American cinema – exploring themes in cinema, business related information, and audience response to cinema.

The A2 coursework sees you making your own short film, as well as conducting your own critical research project into a selection of films that you are particularly interested in. The rest of the course explores world cinema, national cinema and historical periods and political examples of film making.



French AS/A Level

- Young people, their lives and concerns
- Hobbies and leisure – what do young people do in their free time?
- Crime, terrorism and immigration
- Are health issues important to young people? What about smoking, drug abuse and diet?

A stimulating and challenging course, highly respected by all universities and a useful preparation for a wide variety of careers. This course will take you well beyond GCSE, giving you a thorough grounding in the language so as to enable you to use French to discuss and find out about a wide range of topics such as those above. All this and much more in a course that combines linguistic skills with analytical thinking and evidence-based reasoning. Self-reliance skills and adaptability are developed by those who participate in exchanges with a French school.

AS/A level French is a demanding but highly rewarding qualification. A weekly conversation class with a native speaker, exchange trips plus classroom work will enable you to move from the transactional language of GCSE to Advanced level work where you will acquire real fluency.

"I chose to go to Prior Pursglove because it was local and had a good reputation."

Ivan Mupazvirih

(Ex Huntcliff School)

AS Chemistry, Further Mathematics, Physics



Further Mathematics AS/A Level

If you enjoy Mathematics, and are looking for a challenge and a chance to explore new and/or more sophisticated mathematical concepts, then you may benefit from taking Further Mathematics. This can be a rewarding and stimulating course which enables you to distinguish yourself as an able mathematician in the university and employment market and it will certainly prepare you for the transition to a Mathematics-related university course.

In addition to the A level Mathematics units, a further three Pure Maths units are studied, plus a further three chosen from Mechanics, Statistics and Decision Maths. There is the option to study Further Mathematics as a three unit AS level or the full six unit A level; both options are available in the second year of your studies and are assessed through examinations.



"I chose to study at Prior because of the wide variety of courses on offer and the opportunities that are offered to you. Prior is a friendly and supportive environment, which prepares you for the outside world after your college education."

Louise Henderson

(Ex Nunthorpe School)

AS Environmental Studies, Geography, History, Psychology



Geography AS/A Level

AS Geography studies core human and physical geography. A wide range of topics, many contemporary

and present day topical issues, are considered through the study of specific case studies. You will also develop a variety of geographical skills, which will broaden and deepen existing knowledge and be employed with a greater degree of independence. The AS topics include: rivers, floods and management, coastal environments, global population change and health issues. The health issues module may be of particular interest to prospective Medicine students and Biologists.

The A2 course includes managing coasts and examining geological hazards like volcanoes, landslides and earthquakes. Human topics include population pressure and resource management and managing cities' challenges and issues. You will study modern warfare and civil conflicts as well as local scale planning problems and issues associated with urban regeneration. There is the opportunity to participate in local fieldwork in Teesside and York, but also further afield such as Manchester, London or New York.



Geology AS/A Level

This course encourages fieldwork, lab work and a hands on approach to learning this new subject.

Geology is the branch of science concerned with the structure, evolution and dynamics of the Earth and with the exploitation of the mineral and energy resources that it contains in a sustainable way.

Geology examines hazards, resources, plate tectonics, past life and extinctions, map and field skills. Geology applies physical, chemical and biological principles to the investigation of the Earth, but also involves a distinctive scientific methodology, invoking internal and external Earth processes to explain the evolution of the planet through geological time.

Do you have an interest in the Earth as a whole and geological history? Unlike most sciences, Geology requires outdoor study to be fully understood. A number of local and regional field visits are offered from Whitby, High Force and Cauldron Snout to Ingleton Waterfalls to name a few. The AS course introduces the key ideas of the subject including map work, selected fossils, mineral and rocks and the Earth's structure with tectonics. The A2 is more specific, with optional themes including natural resources, advanced map work and glacial geology and climate change.

German AS/A Level

- Drugs, smoking and health issues – are they important for young people?
- Families and relationships – what is important for young people?
- Environmental issues and immigration – what are the issues?
- Crime and terrorism – how can we deal with them?

A stimulating and challenging course, highly respected by all universities and a useful preparation for a wide variety of careers. AS/A level German is a demanding but highly rewarding qualification. This course will take you well beyond GCSE, giving you a thorough grounding in the language so as to enable you to use German to discuss and find out about a wide range of topics such as those above. All this and much more in a course that combines linguistic skills with analytical thinking and evidence-based reasoning. Self-reliance skills and adaptability are developed by those who participate in exchanges with a German school.

Government & Politics AS/A Level

This is a subject that allows you to explore governmental practice both in the UK and the USA, addressing questions such as:

- How does Parliament work?
- How powerful is the US president?

You will first take an AS course that will examine the UK political system:

- How democratic is the UK?
- How powerful is the Prime Minister?
- Do judges protect our rights?
- Are pressure groups beneficial to democracy?

At A2 level, you will then move on to look at American government and politics:

- How do American pressure groups influence Congress?
- How does the Constitution protect liberty in the USA?
- How important is the Supreme Court?
- How important is race in US politics?



Health & Social Care AS/A Level

This course covers aspects of Biology, Sociology, Psychology and Health.

The Health and Social Care services are studied along with many of the issues that will affect you if you choose to work in this setting. It is aimed at students who are hoping to enter employment in this sector, either directly or after further training.

The A level course will provide you with the qualifications necessary for many higher education courses. You will be encouraged to investigate working environments in the Health and Social Care sector. This may be through work experience and visits as well as via the internet and paper based resources.

Health & Social Care GCSE

Are you interested in health and well-being? Would you like to know more about first aid/risk assessments and do you enjoy putting your judgement to the test? Then this could be the course for you.

You will achieve first aid experience and visit different care settings to help you understand about safeguarding and protecting individuals in care. You will learn about healthy eating and exercise for promoting health and well-being and investigate job roles in different care settings.

This course could help you move onto other A levels after completion, or simply help you find work in different care settings, from childcare through to the elderly.



History AS/A Level

This is a fascinating course where you will explore three diverse topics:

- Russian Revolution 1880 – 1924
- Civil Rights in the USA 1945 – 1968
- Henry VIII Authority and Nation 1509 – 1540

You will study two modules in the first year, which will be assessed solely by examination. In the second year there are a further two modules, one of which is coursework. History is an intriguing subject: alongside studying events which have shaped the world we live in today, it teaches you a variety of useful skills such as critical thinking and evidence-based reasoning. If you want to try something different and have a passion for History, then this is the course for you.



ICT OCR National Level 2

This course has been developed to recognise learners' skills, knowledge and understanding of Information and

Communication Technology functions, environments and operations. You will carry out a range of tasks that have been designed to recognise your achievements in a modern, practical way that is relevant to the workplace.

All units are coursework based and internally assessed; you can gain a pass, merit or distinction.

No previous knowledge is required for this one year course. You will complete a mandatory unit which covers the essential skills for the modern workplace, such as organisation and file management, downloading from the internet, sending and receiving emails, using spreadsheets and database management. You will complete two other units. Many students use this as a stepping stone to employment or as a progression route to the OCR National level 3.

ICT OCR National Level 3

At this level students are offered a more in-depth look at ICT in the modern workplace, and given an insight into its role in specialist careers over two years. This qualification will provide the practical skills and knowledge required to succeed in ICT related careers. This is offered at Certificate level which is the equivalent of one A level and also at Diploma level which is the equivalent of two A levels.

In the first year, all students will study two mandatory units, and a further one unit for the Certificate or a further four for the Diploma. Throughout this year you will develop a thorough knowledge and understanding of communication in a business context, and apply this to using ICT in effective business communications. You will learn why teamwork is an essential skill in working in ICT related projects.

In the second year you will learn how to use various techniques to analyse and interpret numerical data, and develop interactive media product to showcase an event or situation. Again, there are a further three units for the Certificate and a further six for the Diploma.

Italian AS Level

Able linguists with ability to grasp grammatical rules quickly would be able to study Italian from scratch and reach AS level in one year. We have had several very successful students with no previous knowledge of the language who have gone on to achieve high grades and pursue the subject to degree level at university.

A stimulating and challenging course, highly respected by all universities and a useful preparation for a wide variety of careers. AS/A level Italian is a demanding but highly rewarding qualification which will give you a thorough grounding in the language so as to enable you to use Italian to discuss and find out about a wide range of topics such as those outlined below:

- Earthquakes in Aquila
- Changing values in traditional Italy
- Corruption and violence in Italian football
- Italian partisans overthrowing Mussolini

All this and much more in a course that combines linguistic skills with analytical thinking and evidence-based reasoning.



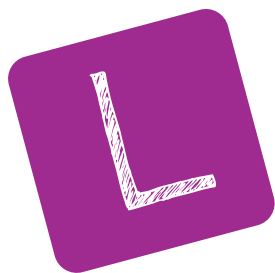
"Prior is a college that aims to challenge you and also helps you achieve beyond your expectations. It offers many different opportunities and clubs to get involved in and is a great stepping stone to prepare you for your future."

Olivia Wood

(Ex Huntcliff School)

AS English Language & Literature, French, Philosophy, GCSE Italian





Latin GCSE

We offer you a beginners' course, which can lead on to a GCSE qualification. This course is fast-paced and stimulating. You can learn Latin in two years and

gain a greater understanding of your own language and culture. Latin is a written language so the emphasis is on learning to read it in the original. As well as studying the language you will also consider aspects of Roman culture through archaeological evidence. In the second year you will study some original Latin authors such as Livy and Suetonius.

Law AS/A Level

- Ever wondered about the difference between murder and manslaughter?
- Or what society hopes to achieve by sending someone to prison?
- Or the difference between theft, robbery and burglary?
- Or what the difference is between juries and magistrates; a solicitor and a barrister; or the different types of court?

These and many other questions will be answered during the course. Our course starts by looking at the way the English legal system is organised, and the professionals involved. Study where the law comes from (Parliament and judges) before completing year one with an introductory look at criminal law and negligence.

In the second year we focus on criminal law and legal issues (such as law and morals and law and justice) where you have the chance to explore your own ideas. The course combines a range of classroom techniques with various enrichment opportunities.

Applied Law (BTEC Subsidiary Diploma & Certificate)

Law is the practice of enforcing social control by regulating people's behaviour. It is about rules, regulations and laws passed by the British Parliament and the European Union. We divide law into the Criminal Code, which deals with topics such as murder and theft, and the Civil Code, which deals with issues such as disputes between neighbours and personal injury claims.

BTEC qualifications are highly regarded by both universities and employers. This programme of study will provide you with a more practical insight into the world of legal work and will help prepare you for a career in the police force, local government, business and areas of legal practice. It will also provide a basis for future professional qualifications and a rewarding career.

You will study such subjects such as:

- Dispute Solving in the Legal System
- Understanding Law Making
- Aspects of Legal Liability
- Unlawful Homicide and Police Powers
- Aspects of Property Offences and Police Powers
- Aspects of the Law of Tort

This course is assessed by portfolio through both oral and written assessments.



Mathematics AS/A Level

Whatever your ability in Mathematics, our aim is that you develop your understanding and

enjoyment of the subject as much as possible and achieve success in your chosen course. All Mathematics A levels are highly regarded by employers, universities and colleges for a wide range of courses and careers. All of our courses are currently made up from units from the AQA Specifications in Mathematics and Statistics; three units complete the AS award and a further three units form the A level. All of the units are assessed through examinations. The first two core units in Pure Mathematics represent two thirds of the course and are common to all of our AS and A level Mathematics courses:

Pure Mathematics

You will be extending your knowledge and skills in topics such as algebra and trigonometry, as well as learning some brand new ideas such as calculus. Although many of the ideas are interesting in their own right, they also serve as an important foundation for the other branches of Mathematics.

You will then choose one of the following options for the last third of your course.

Decision Mathematics

Decision Mathematics involves the use of algorithms to solve a wide range of practical problems such as the scheduling of complex projects, transport planning and the routing of telecommunication messages. This type of Mathematics will appeal to those of a practical nature and will combine well with subjects such as Computing, Information Technology or Business Studies.



"I chose to come to Prior as it has a friendly and relaxed atmosphere. All the teachers have been extremely supportive and helped me to get the best grades at the end of the year."

Elizabeth Harper

(Ex Bydales School)

AS Biology, Critical Thinking, Law, Mathematics, Psychology

"I chose Prior Pursglove because it offers a diverse range of subjects and courses to choose from. The environment around the college is always friendly and relaxed and the teachers are very supportive and encouraging. There is also a large range of resources to help you with your studies. I would really recommend the college to students looking for a well respected education."

Georgia Parker

(Ex Rye Hills School)
AS Biology, Law, Mathematics,
Performing Arts



Mechanics

Mechanics is essentially the mathematics of force and motion. You will learn the technique of mathematical modelling – turning a complicated physical problem into a simpler one that can be analysed and solved using mathematical methods. Many of the ideas you will meet will form an introduction to such modern fields as cybernetics, robotics, biomechanics and sports science, as well as the more traditional ideas of engineering and physics.

Statistics

Statistics involves the extension of ideas of data handling and probability involved in GCSE Mathematics with a view to being able to draw conclusions or answers to questions such as 'Does drug X reduce heart attacks?' Many of the ideas encountered have applications in a wide variety of fields such as risk analysis or quality assurance on a production line. Statistics can also be studied as a full A level in its own right (see separate entry).

Use of Mathematics

Use of Mathematics covers much the same ground as the conventional Mathematics A level but puts the emphasis more on problem-solving and the practical application of Mathematics while reducing some of the content. This course is particularly suitable if you are less confident with algebra. There are three modules in the first year comprising: Pure Mathematics, Decision and a choice between Mechanics and Statistics (all these topic areas are similar to the equivalent Mathematics units but are more practical and generally have less content). In the second year, there are three modules which focus on the applications of Mathematics and involve two small student projects. It is accepted by many employers and universities as a viable alternative to the original course.

Mathematics (Modular) GCSE

This is a one year modular course which will enable you to improve on GCSE grades of D/E. Modular exams are taken during the year and at the end, potentially giving students two opportunities to achieve the desired grade.

Functional Mathematics

This is a one year level 2 course involving practical applications of number and calculations in everyday situations. It leads to a well recognised qualification which can be a good alternative to GCSE Mathematics.



Media Studies AS/A Level

The media play an increasingly powerful role in today's society. They provide us with information and entertainment and communicate social values. AS/A Media Studies is a lively and interesting course in which students examine all aspects of the media in Britain today.

In the AS course you will build up a portfolio of work producing articles, photo shoots and the front covers for different types of magazines – as well as supporting written analyses and research evidence. You will focus on key media concepts and learn about TV drama and research into media industries – such as music, film, video games, newspapers or radio. Good IT skills are recommended if choosing to study AS Media as you will set up and maintain a blog and be using Photoshop and video editing software frequently. If you choose to go on to the second year of the course you will produce your own film and supporting print work and produce a presentation of the research, planning and evaluation of your work. You will also focus on contemporary media issues where you will critically examine the role of the mass media in our lives.

“The best things about Prior are the helpful teachers – who put in extra time and do everything to make sure you get the best grades possible – and the great location with lots of places to go to eat and socialise with friends.”

Robert Wake

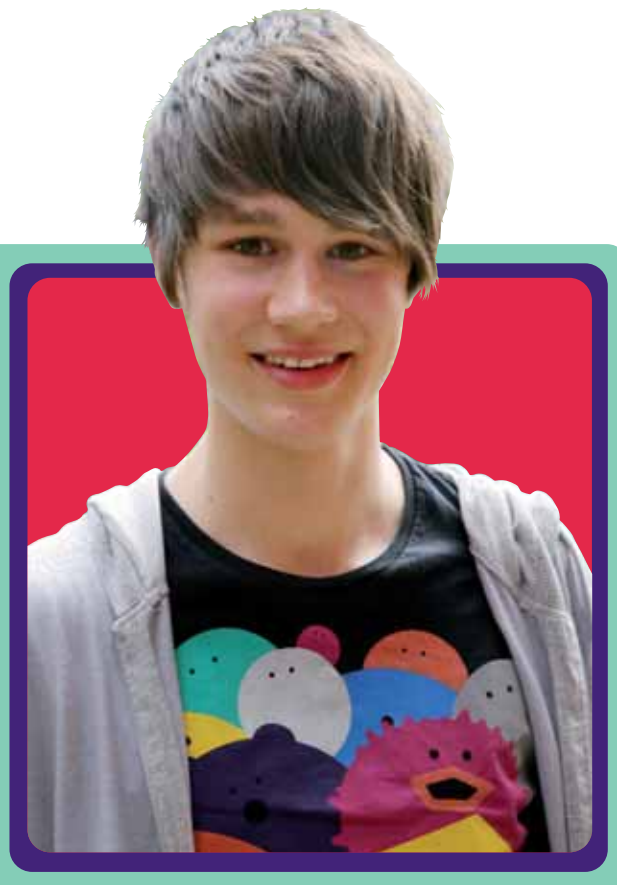
(Ex Trinity School)

AS English Language, History, Law, Media Studies

Media Studies (Writing & Publishing) National Diploma

This two year course will allow you to achieve a qualification equivalent to two full A levels. The course takes the place of two AS courses on your timetable and there are no exams, instead work is all portfolio based.

The course follows a specialist pathway of publishing and writing which means you will focus in particular on factual writing (reporting/journalism), fictional writing (scriptwriting, screenplays, short stories), photography (digital photography and editing), drawing and illustration, graphic design and desktop publishing (design and layout) and career development. Professional practice is expected – you will be developing vocational skills and be expected to think and produce work that is of industry standard.



Music AS/A Level

The AS and A2 qualification in Music will develop your practical, creative and analytical skills. The course concentrates on your aural skills and musical understanding in order to develop a firm foundation for analysing music. The course also requires you to be creative and to perform on your chosen instrument as a soloist, in an ensemble, or using music technology.

If you choose to continue at A2 level in Music, you will be using all the skills you have developed to gain a more intense level of musicianship. You will study music from the Romantic period and Jazz music of the twentieth century and develop a more advanced level of aural awareness and analytical skill. There is also a composition or arranging assignment and a solo performance on your instrument or using music technology to perform.

Music Technology AS/A Level

Music Technology is an exciting opportunity for students who are interested in music and the practice of understanding and using technology to produce music. This course will involve learning about popular forms of music and methods of music technology and production. You will be using computer software to sequence music as well as producing a multi-track recording and using your creativity to produce a sequenced arrangement of a piece of music.





Performing Arts (Acting Pathway) AS/A Level

An exciting course which focuses largely on you as a performer. You will develop your personal skills in performance, working towards a final performance in the summer term.

You will have a personal skills development profile which you are expected to develop and maintain improvement in, which will eventually culminate in a showcase of work at the end of the course. You will also look in-depth at the performing arts industry, from the many types of performing venues there are to the different job roles available in the performing arts and getting work.

Performing Arts BTEC First National Diploma

A one year course, equivalent to two GCSEs, offering performance opportunities in a range of styles. You will study the performing arts business to develop skills for a career in the industry. It is a vocational course with one hundred percent practical assessment and coursework. Progression can be to AS/A level Performing Arts at this college.

Philosophy & Ethics (Religious Studies) AS/A Level

This course is about asking big questions and looking at a range of responses:

- What is real?
- Is there a God?
- What about suffering?
- Is there a right way to live?
- Can only the end justify the means?
- Are certain actions always wrong?

In AS Philosophy we look at the ideas of Plato and Aristotle and the arguments for and against the existence of God. In AS Ethics we study a range of ethical theories and apply them to medical ethics, for example genetic engineering and thinking about war.

In A2 Philosophy we focus on topics including; life after death, religious language and miracles, whilst in Ethics we examine aspects such as free will and determinism, conscience, environmental and sexual ethics.

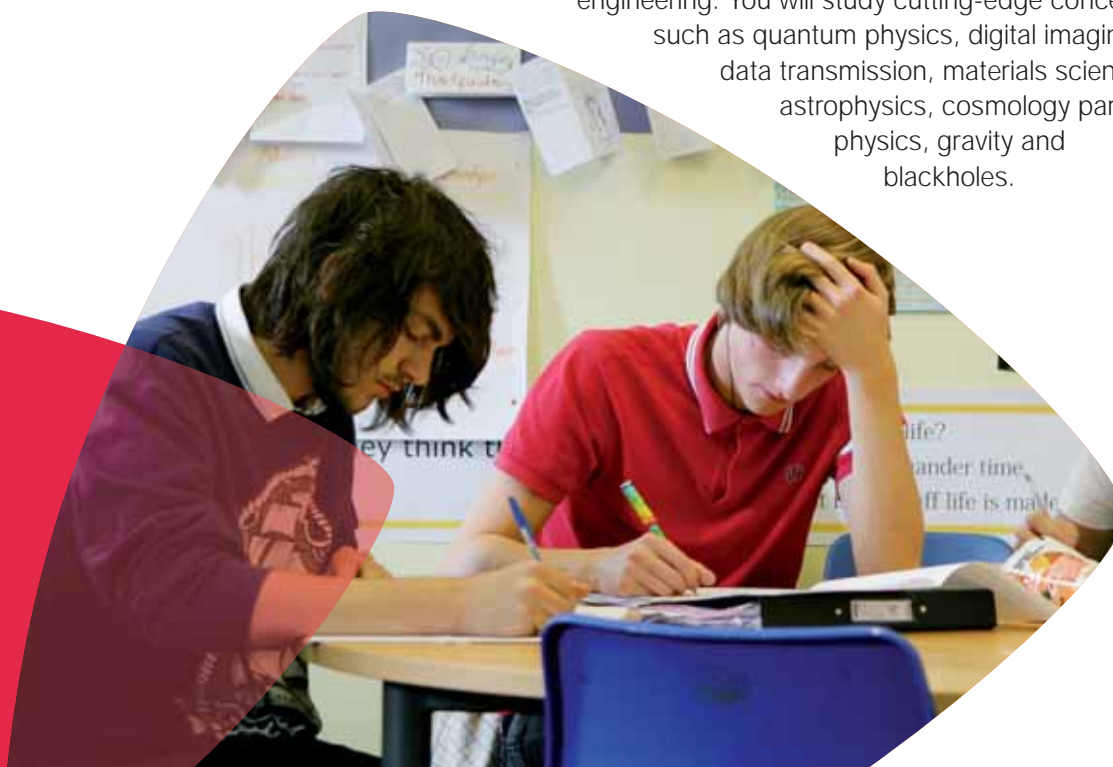
Physical Education AS/A Level

This course deals with the relationship between the theoretical and practical aspects of PE and sport, and how a better understanding of the theory can help improve practical performance.

The course consists of two modules. Module one – An Introduction to Physical Education – covers topics including: human anatomy and physiology, acquiring movement skills and socio-cultural studies. This module is exam based and is worth sixty percent of the overall grade. Module two – Acquiring, Developing and Evaluating Practical Skills in Physical Education – consists of an oral examination/interview and two assessed practical activities of your choice, each worth a further twenty percent of the final grade.

Physics AS/A Level

Advanced Physics is widely regarded as the most innovative, up to date and best supported of all Physics A levels. Designed, tested and supported by the Institute of Physics, it provides an interesting and challenging course along with an excellent foundation for further study in science and engineering. You will study cutting-edge concepts such as quantum physics, digital imaging, data transmission, materials science, astrophysics, cosmology particle physics, gravity and blackholes.



"I chose to study at Prior because it has an excellent academic reputation and offered a wide range of subjects. The work environment is very positive and there is a huge opportunity to socialise with new people. Prior was definitely the right choice for me."

Claire McGrogan

(Ex Trinity School)

AS Biology, Law, Psychology, Textiles



Psychology AS/A Level

Psychology is the study of the mind and behaviour and therefore is relevant to the lives of all of us. If you choose to study Psychology you may find the answers to questions such as:

- Why do people do as they are told?
- Why do you only remember certain things?
- Does watching TV make you violent?
- Should psychologists be allowed to experiment on humans?
- What sort of behaviour would you call 'abnormal'?

Psychology – Use of Statistics

This one year course is for students of Psychology who would like to increase their confidence in handling data which is so important in Psychology. It is fifty percent coursework and will be taught by a Psychology teacher for two lessons a week. Successful completion of this course will give you UCAS points and may also increase your chances of being offered a place to study Psychology at University.



Science GCSE

This one year course offers a second chance at a pass in Core GCSE Science if you missed out first time around. It is open to all students and the

opportunity to access the higher grades will be offered to the more able students. There is also the opportunity to sit Additional Science at GCSE level if this is a more appropriate option to support your future career aims.

Sociology AS/A Level

This fascinating and enjoyable course leads to a greater awareness of the relationship between society and the individual. The focus in lessons will be on reaching understanding through discussion of the issues from the four key topics studied: family & households, education & research methods, the mass media and crime & deviance.

Sociology students answer questions such as:

- Why is divorce increasing whilst marriage is becoming less popular?
- Why do girls have more success than boys in the education system?
- What skills are required to carry out sociological research?
- Does violence in the media produce violent behaviour in society at large?
- Who commits crime and why?
- What is deviance?

We make sociology relevant to your own experiences and incorporate relevant topics and issues into our teaching.



Spanish AS/A Level

- What is the Basque terrorist organisation ETA all about?
- Spanish twentieth century film: Buñuel, Almodovar, Amenabar. From surrealism to melodrama
- The Fiesta Brava: can bullfighting still be justified?
- Crime and punishment, cloning and nuclear energy
- Women's rights in post Francoist Spain
- Digging up the Dead: should modern Spain unearth her gory past?

A stimulating and challenging course, highly respected by all universities and a useful preparation for a wide variety of careers. AS/A level Spanish is a demanding but highly rewarding qualification which will take you well beyond GCSE, giving you a thorough grounding in the language, the essentials and the complexities of grammar and syntax, enabling you to use Spanish to discuss and find out about a wide range of topics such as those outlined above. All this and much more in a course that combines linguistic skills with analytical thinking and evidence-based reasoning. Self-reliance skills and adaptability are developed by those who participate in exchanges with a Spanish school.

Spanish GCSE

Whether you are working in Britain or somewhere abroad, or on holiday on the continent, another language can be very useful to you. You will learn to cope with a wide variety of practical situations (e.g. booking at a youth hostel or hotel, finding your way, ordering a meal, buying clothes). You will learn to talk and write in Spanish about yourself and the world around you. Learning Spanish on a one year course is not easy and does require hard work but you will make rapid progress in a small group and achieve good results.

Sport (Development, Coaching & Fitness) BTEC Certificate, Subsidiary Diploma and Extended Diploma

This course is a non-exam based course studied over two years and upon successful completion is equivalent to three A levels. The course consists of eighteen units which cover a variety of topics including; The Body in Action, Fitness Testing for Sport and Exercise, Sports Nutrition, and Work-based Experience in Sport. This is a vocational course which is assessed by the completion of numerous assignments/tasks over the two years.

This is an ideal course if you enjoy coursework, are very organised and are looking to enter a sports-based career. The Certificate course is similar to the Extended Diploma but it is the equivalent of one AS level and could be taken as an alternative to AS PE.

Statistics AS/A Level

Statistics involves the extension of ideas of data handling and probability involved in GCSE Mathematics with a view to being able to draw conclusions or answers to questions such as 'Does drug X reduce heart attacks?' or 'Is there a link between gender and being left-handed?' Many of the ideas encountered have applications in a wide variety of fields such as risk analysis or quality assurance on a production line or any form of research which involves analysis of data.

As an AS/A level course it is particularly useful as a support for other subjects which may involve research projects, especially Psychology. The course is assessed entirely by exams and makes minimal demands in terms of algebra. It is therefore open to students who have not taken GCSE Mathematics at the higher level. If you enjoy handling numbers and prefer more practical problems then this course should suit you.



"The course choice was by far the best I had seen and, after meeting the staff and seeing how enthusiastic they were, I knew this was the place to be. There is always someone on hand to help whenever you need it – it's just a fantastic college to be part of."

Daniel Johnson

(Ex Acklam Grange School)

BTEC Sport (Development, Coaching & Fitness)



WHAT ELSE CAN I DO?

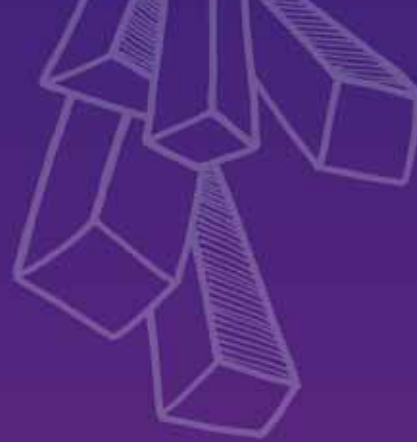
We want you to make the most of the time you spend with us and hope you will take advantage of some of the additional activities which are offered throughout the year.

As you might expect, sport, drama and music play an important part in college. In addition there is a thriving Duke of Edinburgh scheme and we also offer other enrichment activities such as Exotic Animal Handling, Chinese Culture and Food, Creative Writing, Psychology for Education, British Sign Language and First Aid.

The Law Society recently won the regional Mock Trial Competition and then went on to the finals in Ireland, which was an amazing experience for all those involved. Additionally, our Debating Society won the NORVIC colleges debating competition.

The college is a Young Enterprise Academy and the Young Enterprise team have won awards for their business innovation and product. We also have a Cheese Appreciation Society, a Film Critics Club and a Green Environmental Group.

If you are interested in finding out more, a copy of our enrichment activities guide can be found on our website, or you can pick up a copy at one of our Open Evenings.



WHAT IS EXPECTED OF ME?

The college day is 9.00am to 4.00pm. During the day you will have subject lessons, timetabled tutorials and private study periods (PSPs). Attendance at lessons is vital because they provide the foundation for your learning, whilst tutorial sessions help you build essential skills.

To be an outstanding learner you must use all of the college day effectively.

Outside of formal sessions you manage your own PSP time. You will need to spend time on reading, homework, coursework and preparing for exams. Students find the relaxed study atmosphere appealing and very different from school. We treat you as an adult, with respect and, of course, we expect to be treated in the same way.

We have high expectations of you and want you to succeed. We work with you to help you to achieve your goals but you must be committed to work with us to make this happen.

Many of our students have part time jobs but you must be aware that you should not work for more than 10 hours per week. National research shows that any additional part time work will have a negative effect on your learning and grades.



OFSTED REPORT

Prior Pursglove is a good college with some outstanding features, but don't just take our word for it.

Here's what our most recent Ofsted report said about us following our last inspection:

Good results:

"High success rates on A level courses and have been for a number of years"

Good teaching:

"The majority of lessons create a stimulating learning environment"

Good care, guidance and support:

"College tutors work effectively to ensure that students make good progress"

"Students make an outstanding contribution to the college and local community"

Good choice:

"A broad choice of qualifications offered"

STUDENT OPINION

Here's what our students like about studying at Prior Pursglove:

The supportive and friendly staff

The high standards of teaching

How much they learn

The friendly atmosphere

The attractive and centrally located campus

The wide and varied choice of courses

"Prior Pursglove was the only option for me when considering which college to go to; it provided all the A levels I wanted to take, and maintained a consistently high standard of education. The teachers are friendly and welcoming, and have provided excellent help with anything I found difficult. Prior provides a happy, accepting environment for every student."

Alison Daniels

(Ex Freebrough Academy)

AS Chemistry, Biology, English Literature, Mathematics



WHAT SUPPORT IS AVAILABLE?

Personal tutors

You have your own personal tutor who is able to focus on your particular needs, giving you help, advice and encouragement to make sure you are progressing as you should. You meet on a regular basis to discuss any issues you feel are important. There are subject reviews each year and consultation evenings for you and your parents to discuss your progress. You also receive help through the tutorial programme where you meet with your tutor weekly to gain appropriate knowledge, skills and practical help to guide you through your courses, broaden your awareness and to prepare you for the future.

Careers guidance

Careers guidance is your passport to the future. We have specialist advisors who, together with Connexions and your personal tutor, help you make the right choice for your future. There is a dedicated area in the Resource Centre with information and databases on a wide range of careers and universities. You also have the opportunity to take part in careers activities, visits and work experience.

Learning support

In addition to the help you receive from your subject teachers and personal tutors, we also offer additional support when you need it. If you have a specific learning difficulty or disability our experienced team is able to support a range of disabilities, for example, dyslexia, dyspraxia, physical disability, visual impairment, hearing impairment or English as a second language. The support we offer is designed to provide all individuals with what they need to succeed on their chosen course. These may include one-to-one support, British Sign Language communicators, personal care, equipment and resources, assessment and exam arrangements. Additionally, we can offer more practical help in organisation and time management.

Counselling service

Students can sometimes have problems for which they need confidential help and support, for example, personal, stress-related or just need help to make the right choice. If you have a problem, don't be afraid to contact our Counsellor for an appointment.

Financial support

If you are under 19 years of age when you start your course, you will not normally have to pay tuition fees or examination fees on the first occasion.

Maintenance grants for Year 11 leavers are now paid through a PPC attendance allowance. Full details will be available from the college and on the college website.

We also have a Learner Support Fund if you are experiencing financial difficulty which is stopping you joining or continuing your course. It is provided to help towards the cost of travel, books, equipment and visits organised as part of your course. Application forms are available from Student Services.

Transport

The college is situated in the centre of Guisborough and is well served by public transport. Additionally, college buses operate on numerous designated routes and cost £1.00 each way. This gives students the flexibility to plan their transport arrangements around their studies. Further information is available on the college website.



HOW DO I FIND OUT MORE?

Autumn Term

Liaison staff visit many of the schools to speak with Year 11 pupils about the college.

Thursday October 20th 2011
5.30pm – 8.00pm

First Open Evening

Your chance to meet staff and students, tour the campus, speak to current students, view the facilities and obtain more detailed information about the courses that interest you. If you are unable to attend this event, Course Information Guides are available for each subject and copies of these can be found on the college website.

October 2011 – March 2012

Apply early to make sure you get a guaranteed place at the college. Complete the college application form which can be found online on our website at www.pursglove.ac.uk or as a paper based version in the back of this prospectus. Copies are available in school careers libraries or from members of our Schools Liaison team who can be found at most careers events, or you can ring us on **01287 280800** and request a copy from Student Services.

November 2011 – April 2012

After we have received your application form, we will then contact you with an interview date. A large number of the interviews are carried out in schools. If this is not possible, then we will invite you into college for an interview with one of our tutors at the end of the college day. Interviewing will start in the Autumn term. At the interview we will discuss the subjects in which you are interested and talk about what college is like.

Taster Sessions

Too many subjects to choose from?
Undecided which are the best for you?

Why not come to our **Taster Sessions** – held during the Autumn term. During these sessions you will get a feel for the subject, meet the teaching staff and have the opportunity to look at the facilities we offer.

Details of these will be available on the college website, in school or ring the college for further information.



Thursday March 29th 2011
5.30pm – 7.30pm

Our Second Open Evening

An opportunity if you didn't attend the earlier event or to find out about subjects that you missed first time around.

May – June 2012

Your final examinations – Good Luck!

Thursday 28th and Friday 29th June 2012

Preview Days

You will be invited in to college on one of the above dates to spend a full day with us to familiarise yourself with the campus, find out more about your potential subjects, meet your teachers and to help prepare the way for a smooth start to your college career.

August 2012

Exam results!

College will be open to provide advice and support if you need it.

Late August 2012

Enrolment!

At your enrolment interview we will formally enrol you on your chosen courses, you will join Prior Pursglove College and you can look forward to a bright future.



PARENTS MATTER

We welcome the involvement of parents throughout the time a student is with us. Our college is a partnership which certainly includes parents and we hope that they will take every opportunity to support us in all that we do here.

Our prime concern is always the wellbeing of our students and the provision of a caring environment which enables them to achieve their best. We expect students to accept responsibility for their own learning and progress. However, this will be done in the context of support and encouragement to enable each student to reach their full potential. Please contact Student Services for a copy of our Parents Handbook.

Recent comments from parents include;

"Very pleasant welcoming staff. We are very happy with all the support my daughter has received. Many thanks."

"I am very pleased with the staff at the college and feel they have helped my daughter settle in well and achieve highly."

"My son is very happy here; and although he hasn't found the jump in pace and work standard from school to college an easy transition, he has responded well to the advice and support the teachers have given him and has definitely upped his game."

"Pleased with all areas. Staff excellent with studies and support."

"I am very happy with the way my son has settled into college. The staff work hard and ensure he knows how to improve work and are prepared to give further help when necessary. Thank-you."

"Staff seem genuinely interested in my son's education and offered help as appropriate."



ENROLMENT FORM

Application for admission to full time courses 2012-13

Personal details

Surname First name(s)

Address

Postcode

Gender Date of birth

Home telephone Mobile

E-mail

Have you lived in the UK for the last three years? Yes No

If no, please provide evidence of your residency status

Current school/college

Name of parent(s)/guardian(s)

Address (if different from above)

Courses applied for

Subject	Level	Subject	Level
<input type="text"/>	<input type="text"/>	<input type="text"/>	<input type="text"/>
<input type="text"/>	<input type="text"/>	<input type="text"/>	<input type="text"/>
<input type="text"/>	<input type="text"/>	<input type="text"/>	<input type="text"/>

Ethnic origin

White: British Irish other White

Mixed: White & Black Caribbean White & Black African White & Asian other Mixed

Asian or Asian British: Indian Pakistani Bangladeshi other Asian

Black or Black British: Black Caribbean Black African other Black

Chinese or other ethnic group: Chinese other ethnic group

For office use only

Date received Entered on CIS

Please list exams to be taken. If already taken, please list grades (if known)

Subject	Level	Grade	Subject	Level	Grade
_____	_____	_____	_____	_____	_____
_____	_____	_____	_____	_____	_____
_____	_____	_____	_____	_____	_____
_____	_____	_____	_____	_____	_____

Do you have a learning difficulty or disability which you wish to draw to our attention? Yes No

If yes, please give details:

Career aim

Personal interests and achievements

Please use this space to write about yourself, e.g. chances to accept responsibility in or out of school, special interests, sport, art, music, drama, community service, work experience, etc. In particular, relate comments to the course(s) for which you are applying.

Data Protection Act

Data Protection Act 1998: The college collects information about all of its students for various administrative, academic and health and safety reasons. Under the terms of the Data Protection Act 1998 we need your consent to do this. Since we cannot operate the college effectively without processing information about you, we need you to sign the following consent to process statement. If you require any further information about this, please contact the Director of Administration.

Consent to Process Information: I agree to Prior Pursglove College processing personal data contained in this form, or other data which the college may obtain from me or other people, whilst I am a student. I agree to the processing of such data connected with my studies or my health and safety whilst on the premises or for any other legitimate reason.

Signed _____ Date _____

Please tear off this completed application form and return to:
Prior Pursglove College, Church Walk, Guisborough TS14 6BU

EQUAL OPPORTUNITIES

Here at Prior Pursglove College, staff play an important role in safeguarding the welfare of our students. The college has a Child Protection Policy to ensure that the welfare of the student is always placed at the centre of our activities.

We aim to treat everyone equally and with respect, regardless of differences in culture, ability, race, gender, age, religion, sexual orientation or social class. Copies of our Equality and Diversity Schemes are available on our website or can be sent out on request. If you would like a copy of this prospectus or our schemes in a different format or language, please contact Student Services on 01287 280800.

We are also aware of our responsibilities under the Disability Discrimination Act. We will make all reasonable adjustments to facilities and services to ensure that students with a disability are not substantially disadvantaged or treated less favourably than other students who are not disabled.



RESULTS 2011

A Levels	A*	A	B	C	D	E	U	Total
Accounting		2	8	3	4	2		19
Art & Design	9	12	29	32	21	7		110
Biology	5	12	24	20	22	11	4	98
Business Studies		2	11	12	8			33
Chemistry	4	19	14	15	4	12		68
Classical Civilisation		3	7	3	3	3		19
Computing		1	1	2	2			6
Design Technology			3	5	3			11
Drama & Theatre Studies			5	5	2			12
Economics	1	2	8	14	1	1		27
English Language	2	9	16	21	7		1	56
English Language & Literature	1	7	18	15	18	6		65
English Literature	3	10	9	11	14			47
Environmental Studies			1	3	1		1	6
Film Studies		4	8	10	9	1		32
French		3	3	3	1			10
Further Mathematics	4	16	11	3	1	1		36
General Studies	3	12	44	79	114	89	35	376
Geography	5	10	12	13	17	3	1	61
Geology	1		2	3	4	2	1	13
German		3	1	1				5
Government & Politics	1	4	3	4	2		1	15
History		8	7	24	20	6		65
ICT			1	4	1		1	7
Italian		1	1					2
Law	4	23	22	22	17	2		90
Mathematics	23	38	29	24	14	17	3	148
Media Studies		4	5	14	20	3		46
Music		1	2	1				4
Music Technology			2	3	5	2		12
Philosophy & Ethics	5	3	8	3	5			24
Physical Education	4	5	13	5	5	5	1	38
Physics	3	11	7	6	6	6	3	42
Psychology	4	6	20	23	27	11		91
Sociology	2	7	13	23	19	10	1	75
Spanish		2	4		1			7
Statistics		2	8	10	4	4	2	30

Applied A2 (Single)	A*	A	B	C	D	E	U	Total
Business		1	5	18	3	2		29
Health & Social Care	1	5	18	24	12	3	1	64
ICT			3	3	6	5	2	19
Performing Arts	2	5	3	7	3			20
Science				1		1	1	3
Travel & Tourism				7	2	1		10

Applied A2 (Double)	*A	AA	AB	BB	BC	CC	CD	DD	DE	EE	U	Total
Business				1	1		1					3
Health & Social Care	1	3		4	1	7	4	2	3	4		29
ICT									1	1		2
Travel & Tourism								1	1			2

BTEC National Diploma	DDD	DDM	DMM	MMM	MMP	MPP	PPP	Total
Art & Design	2	1	2			1	1	7
Performing Arts	8							8
Sport	8	1	4					13

BTEC National Award	DS	ME	PA	FL	Total
Applied Law	13	2		1	16
Personal & Business Finance	1		1		2

OCR National Diploma	DS	ME	PA	FL	Total
Media	6	2	2		10

We are the best college in the area for getting students a place at university.

99%
A Level
pass rate

In the top 7% in the country. Sutton Trust Report, 2011